



Let's Explore tthe Endless Possibilities of Paint



Why Choose



- We use only the best paint in a two-coat process where required
- We have a pro account with Sherwin Williams where we carry over our pro savings on cost of paint & stain to our customers
- Perfect Painting has 5+ years of painting and construction experience
- Brandon & Elizabeth Byrd (owners) manages all job sites and offers free color consulting.
- On exteriors, we caulk all soffits, batting, trim seams, soffit vents, and entryways
- We do not get over spray areas it does not belong
- On interiors, we back roll paint before or after application (where necessary)
- We leave your jobsite cleaner than when we arrived
- Perfect Painting provides a customer warranty
- Our company offers quality, confidence, and security your money deserves

OUR REVIEWS SPEAK FOR THEMSELVES



Betty W.

★★★★★ Verified

Sep 6, 2024

Liz did a great job in a timely fashion



You can see the before photos & the amazing job that Liz & Brandon did on painting the bricks, shutters & front door. I was very pleased with the quality of work, I can highly recommend them for your painting needs!



Art M.

★★★★★ Verified

Sep 21, 2024

Did a wonderful job!!

Our Painting Process



PREP:

She Paints begins by doing all necessary prep work prior to painting. Covering of flooring and furniture. Caulking of cracks and spackling of small holes is done prior to painting walls. If pictures or wall hangings are to be installed in same location, nails or hangers can be left in place and painted over.

PAINT:

Typically, the same day painting begins, She Paints applies all paints according to manufacture specifications to insure proper warranty. We apply most interior paints in a two-coat process to thickness specifications and if necessary, add more for coverage or hiding at our discretion.

CLEAN:

She Paints will clean the job site upon completion. This includes picking up all trash, vacuuming, wiping surfaces, etc.

INVOICE:

Upon completion, She Paints emails an invoice the day the job is complete along with information pertaining to asking for warranty work if any is required.



Additional Job Info

Our estimate and proposal include the following notes that may not be specifically addressed on the estimate itself. The following are included in the bid and final cost:

- A. Paint sheens will be satin on walls and semi-gloss on trim unless customer specifies otherwise in writing on signed customer color form. Satin sheens generally out-perform flat paints and are easier to clean.**
- B. Each house has its own characteristics. Primers, prepping techniques, and finish coats may be modified to maximize overall job performance.**
- C. When completed the jobsite is 100% cleaned.**
- D. She Paints will leave left over paint with customer. If no left over paint a quart of the matching color or stain will be left with all completed jobs.**

Customer Warranty

She Paints is dedicated to satisfying and serving our customers.

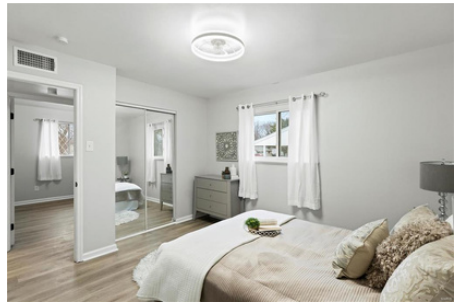
Our workmanship is warranted (conditionally) for 1 year. If at any time during your 1 year warranty you determine She Paints has missed painting any areas of your project or failed to leave your project in better condition than when we arrived, She Paints will promptly come back and try to take care of any issues or concerns you may have.

She Paints only uses the best quality paints and materials. If you have any concerns with the condition or failure of paint or products applied by She Paints, we will promptly schedule a visit to go over the concerns with you. If at that time we determine that there is a product failure, we will schedule a time to take care of such failure and attempt to have the paint supplier pay for all such labor or materials.

Your warranty begins on the day of project completion.

Check out our work

INTERIORS



EXTERIORS





QUALITY PRODUCTS RECOMMENDED BY



Elizabeth Byrd

314-546-2568

ShePaintsResidentials@gmail.com

Ceiling Paint



Premium Ceiling Paint

- Brightest, whitest ceiling paint for a fresher, cleaner look
- Maximizes productivity with self-priming, one-coat coverage
- Ultra-flat finish reduces the look of minor surface imperfections
- Non-lapping formula for a uniform finish
- Mold and mildew resistant



ProMar Interior Latex Ceiling Paint

- Self-priming properties achieve an attractive finish in one fewer step than many builder-grade ceiling paints
- Offers good light reflectivity and is tintable to hundreds of colors
- Great adhesion and hide
- Designed for spray application

Interior Wall Paint (Moisture Resistant)



Emerald® Interior Acrylic Latex Paint

- Exceptional hide, coverage, durability, and washability
- Paint and primer in one with a smooth, uniform finish
- Outstanding scrub, stain, block, water spotting and burnish resistance
- Inhibits the growth of mold and mildew
- Available in Flat, Matte, Satin, Semi-Gloss



Duration Home Interior Acrylic Latex

- Advanced stain blocking technology - a paint and primer in one
- Minimal color rub-off and less visible shine after washing
- New high hiding accent base
- Anti-microbial agents
- Ideal for high-traffic residential and commercial spaces
- Available in Flat, Matte, Satin, Semi-Gloss

Trim & Door Paint



Emerald® Urethane Trim Enamel

- Interior/exterior water based urethane modified alkyd with the look and feel of an alkyd/oil finish
- Outstanding flow and leveling for a smooth, uniform finish
- Meets the most stringent VOC regulations with <50g/L
- Excellent color and gloss retention for exterior applications



ProClassic Waterbased Acrylic Alkyd

- Alkyd performance characteristics with acrylic properties
- An excellent choice for doors and trim, as well as cabinets and furniture
- Excellent flow, leveling and sag resistance for a smooth, durable finish
- Non-yellowing compared to conventional alkyds
- Available in Satin, Semi-Gloss

Color Resources

Virtual Color Consultations for Homeowners

- FREE, 30-minute consultations
- Expert advice from a trained Color Consultant via video chat, a phone call, email or text.
- Receive color recommendations, a digital color palette and free color chips sent to your door!
- Scan the QR code or visit swcolorconsult.com to request your consult today!
- Residential Spaces Only

Sheen:

SW6239 Upward

Color Number: SW6239

Color Display Locator: 224-C1

Color Family Name: Blue

Sheen:





QUALITY PRODUCTS RECOMMENDED BY



Elizabeth Byrd

314-546-2568

ShePaintsResidentials@gmail.com

Basement Coatings



LOXON® Water Blocking Primer/Finish

- Primer and finish coat in a single product seals bare interior masonry walls from hydrostatic moisture penetration.
- Resistant to moisture up to 12 psi for above and below grade interior and above grade exterior use.
- Can be tinted to a wide range of colors
- May be used as a primer/finish or to maintain odor-reducing benefits.
- May be topcoated with Harmony® Interior Latex finishes.



Porch & Floor Enamel

- Ideal for porches, patios, basement stairs and floors, workshops, laundry areas, storage rooms and more
- Great washability maximizes the life cycle of the coating
- Compliant with low-slip rating required by the Americans with Disabilities Act
- Available in satin and completely tintable in many colors

Self-Cleaning Exterior Coatings



Emerald Rain Refresh Exterior Acrylic Latex Paint

- Ultra-durable exterior coating with Self-Cleaning Technology
- Formulated so dirt washes away upon contact with rain or water
- Excellent UV and weather protection
- Can be tinted in VinylSafe™ paint colors
- Can be applied to many properly prepared surfaces
- Flat, satin and gloss sheens



LOXON® Self-Cleaning Acrylic Coating

- Provides a highly durable and weather-resistant finish.
- Highly alkali and efflorescence resistant
- Apply directly to fresh concrete (at least 7 days old)
- Mildew-resistant formula contains agents that inhibit the growth of mold and mildew

Exterior Wood Stain



SuperDeck Exterior Waterborne Semi-Transparent Stain

- Now with 3-year durability – penetrates deeply offering excellent UV protection and lasting defense against mildew and premature weathering
- Waterproof new or weathered wood
- Soap and water cleanup
- Improved weathering
- Product can be applied to damp wood, so most jobs can be finished in a single day.



WoodScapes Rain Refresh Exterior House Stain with Self-Cleaning Technology

- Self-Cleaning Technology with improved dirt pickup
- Dirt washes away with rain or water for a clean, fresh look
- Excellent adhesion and resistance to peeling
- Low temperature stain application as low as 35°F
- Maintains a fresh appearance and provides a mildew resistant coating

Color Resources

Virtual Color Consultations for Homeowners

- FREE, 30-minute consultations
 - Expert advice from a trained Color Consultant via video chat, a phone call, email or text.
 - Receive color recommendations, a digital color palette and free color chips sent to your door!
 - Scan the QR code or visit swcolorconsult.com to request your consult today!
 - Residential Spaces Only
- Sheen:



SW7048 Urbane Bronze

Color Number: SW7048

Color Display Locator: 245-C7

Color Family Name: Neutrals

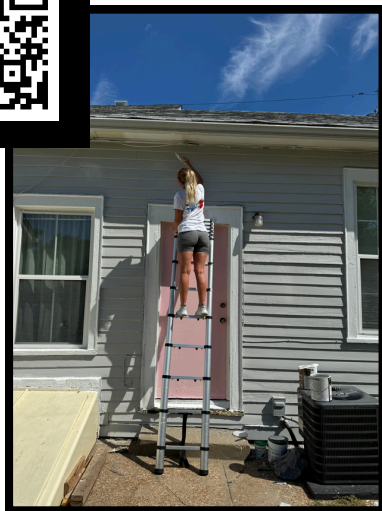
Sheen:



**Thank you for the opportunity to
provide an estimate for your
residential painting needs!**



Check out our website



**We look forward to the opportunity to
work with you!**

@shepaintsstl

